

# **FFPSA Implementation Efforts in LA County**

LA County DCFS · Kym Renner & Genie Chough

FFPSA Convening · CWDS Training Center

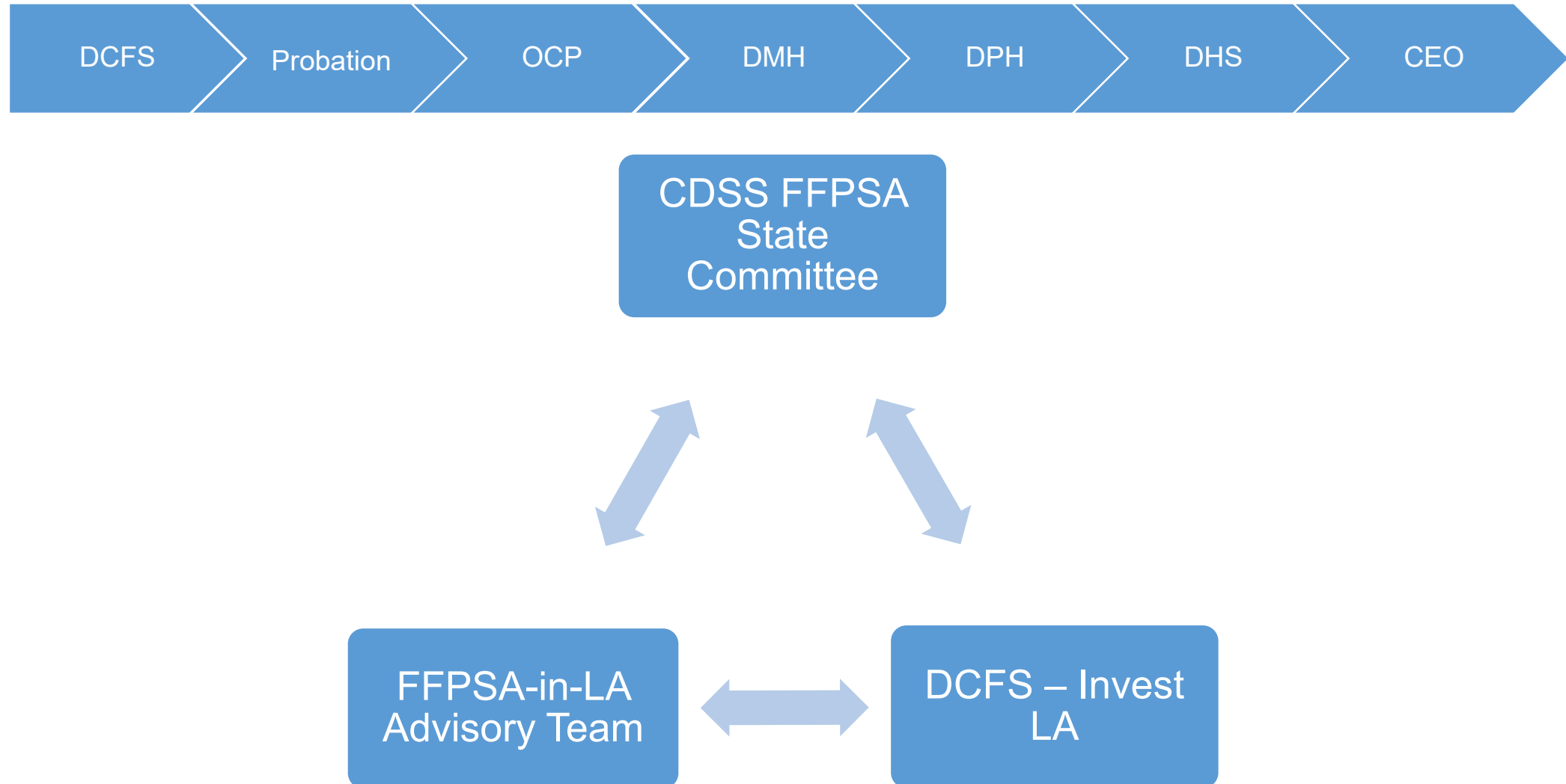
Riverside, CA · November 20, 2019



# Highlights

- Introductions
- LA County Governance Structure & Composition
- Consultant Support
- Implementation Timeline
- Landscape Analysis
- Q&A

# FFPSA-in-LA



# FFPSA-in-LA Workgroups

- Advisory Team - Quarterly
- Candidacy - Complete
- Service Array - Monthly
- QRTP - Monthly
- Expectant & Parenting Youth - Existing



Los Angeles County  
Department of Children  
and Family Services

# Workgroup Composition

- **Workgroup Co-leads:** Alliance for Children's Rights & Children's Law Center
- **DCFS Internal SMEs:** Contracts, Data, Fiscal, Policy Research
- **Advocates:** CASA, Children Now, Public Counsel, Alliance, CLC
- **Community-Based Providers:** ACHSA, Children's Bureau, CII, Five Acres, Friends of the Family, Para Los Ninos, Pennylane, St. Anne's, Walden, Wayfinder
- **County Departments:** CEO, Commission for Children & Families, County Counsel, Mental Health, Office of Child Protection, Probation, Public Health
- **Philanthropy:** Ballmer Group, Casey Family Programs, Center for Strategic Partnerships, First 5 LA, Pritzker Foster Care Initiative, Hilton Foundation,
- **Research Institutes:** Chapin Hall, USC Children's Data Network, UCLA Pritkzer Center
- **Others:** CBHDA, Mission College



**Los Angeles County  
Department of Children  
and Family Services**

# Consultant Support

- Identified a vendor to engage in overall FFPSA implementation efforts. Scoping out a 26 month engagement.
- Contracted with Dennis Blazey for fiscal guidance & analysis.
- Reaching out to philanthropic partners for support.

# Implementation Timeline



# Internal Landscape Analysis

LA County DCFS Program - FFPSA eligibility Analysis									
Non-Contracted Service/Program	Program Manager	Bureau	Funding Source % Fed, State, NCC	Evidence Based Practice	Level of Evidence Based Practice	Outcome Evaluation Tools	FFPSA Candidacy Eligible	FFPSA Services Qualified (MH, sub abuse, in home parent)	
Alternative Response Services (ARS)	Blanca Vega	Contract Services Bureau	7.4% Federal (Community Based Child Abuse Prevention) 5.9% State (KIDSplate) 86.7% NCC	Agencies utilize a variety of EBPs to provide services, including but not limited to: Nurturing Parenting, Incredible Years, Parent Child Intervention Therapy (PCIT), Trauma - Focused Cognitive Behavioral Therapy (TF-CBT), Positive Parenting Program (Triple P), Seeking Safety		Agencies are all utilizing the Family Assessment Form (FAF) for initial assessment of the family and to measure on-going progress, FAF is based on the Protective Factors.	Depends	Yes	
Behavioral Aide Services for High Risk Youth	Jennifer Hottenroth	Bureau of Clinical Resources and Services	100% State	No		Yes	No	No	
Child Care	Lena Ward	Bureau of Clinical Resources and Services	62% State (California Dept. of Education) 18% NCC	No		No	No	No	
Family Preservation (FP)	Blanca Vega	Contract Services Bureau	6% Fed 36% State 58% NCC	Agencies utilize a variety of EBPs to provide services, including but not limited to: Nurturing Parenting, Incredible Years, Parent Child Intervention Therapy (PCIT), Trauma - Focused Cognitive Behavioral Therapy (TF-CBT), Positive Parenting Program (Triple P), Seeking Safety		Agencies are all utilizing the Family Assessment Form (FAF) for initial assessment of the family and to measure on-going progress, FAF is based on the Protective Factors. In addition, we have on-going recidivism data tracked by DCFS to measure program outcomes.	Depends	Yes	
Parents in Partnership (PIP)	Dominique Robinson	Juvenile Court and Adoption Bureau	TBD				Depends	Yes	
Partnerships for Families	Yessenia Mendoza-Menchaca	Contract Services Bureau	100% State	Nurturing Parenting Program (NPP)		The NPP requires the Adult Adolescent Parenting Index (AAPI) as a pre/post outcome tool.	Depends	Depends	
Permanency Partnership Programs (P3)	Jane Gonzalez	Resource Family Recruitment and Approval Division	100% NCC	No		No, however an evaluation from Child Trends (a nationally recognized research organization) found significant results in the reduction of children who enter out of home care.	No	No	
Prevention and Aftercare Services	Alma Golla	Contract Services Bureau	29% Fed 4% State 67% NCC	Agencies utilize a variety of EBPs, including but not limited to: Effective Black Parenting, Incredible Years, Project Fatherhood, A Window between Two Worlds, Asian American Family Enhancement Network, Supporting Father Involvement, Los Ninos Bien Educados, Nurturing Parenting Program (NPP), Parent-Child Interactive Therapy (PCIT), Trauma-Focused Cognitive Behavioral Therapy, Functional Family Therapy		Each program requires a Protective Factors Survey 30 Version 2. The NPP requires the Adult Adolescent Parenting Index (AAPI).	Depends	Yes	
Relative Support Services (RSS)	Derrick Perez-Johnson	Juvenile Court and Adoption Bureau	100% Title IV-E Waiver	EBPs include Parent-Child Interaction Therapy, psycho-educational support groups, legal advocacy, tutoring, counseling and mental health services, and recreational/vocational activities (Burnette, 1998; Denby, 2011); Kelly, Crofts, Yoker, Whitley, & Spe (2001); McCollon, Janicki, & Kolmer (2004); Shlonski et al., (2004); Strozier (2012)]		DCFS RSS Logic Model, RFATS Binti Tracking System, CWS/CMS	No	No	
Specialized Care Increments (SCIs)	Jennifer Hottenroth	Bureau of Clinical Resources and Services	Varies based on the type of case and specialized rate	No		No	No	No	
Wraparound Approach Services	Jennifer Hottenroth	Bureau of Clinical Resources and Services	36% Fed 33% State 31% NCC	No		Yes	Depends	Yes	
Contracted Service/Program	Program Manager	Bureau	Funding Source % Fed, State, NCC	Evidence Based Practice	Level of Evidence Based Practice	Outcome Evaluation Tools	FFPSA Candidacy Eligible	FFPSA Services Qualified (MH, sub abuse, in home parent)	
AB1733/2994 Child Abuse		Contract Services Bureau		Currently, CAPIT providers are not required to utilize any one EBP. With the new contract		Agencies utilize the Protective Factors survey to assess for progress. Currently the			





# Contact Us!

Deputy Director Kym Renner

[rennek@dcfs.lacounty.gov](mailto:rennek@dcfs.lacounty.gov)

213.351.3244

Asst Deputy Director Genie Chough

[gchough@dcfs.lacounty.gov](mailto:gchough@dcfs.lacounty.gov)

213.739.6448



**Los Angeles County  
Department of Children  
and Family Services**