

# OVERVIEW OF THE 'RISK ASSESSMENT AND SAFETY PLAN' FOR SUBSTANCE USE DISORDER PROGRAMS: LIVE WEBINAR



Trainers: [Kseniya Yershova, Ph.D.](#) & [Carrie Binam, LMFT, CCM](#)

Thursday, June 13, 2019 | 10am-11am

Course Code: BHE0108/LIVE

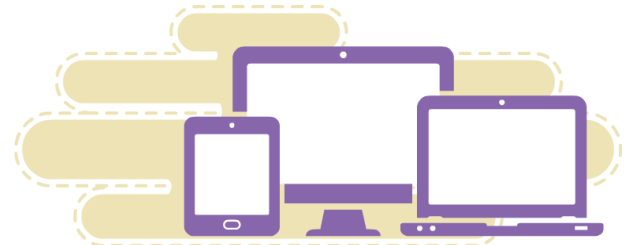
## Course Description

In this interactive live webinar, participants will learn about the new County of San Diego County 'Risk Assessment and Safety Plan' form which has the Columbia Suicide Severity Rating Scale (C-SSRS) embedded on the first page. Participants will receive an overview of the C-SSRS and will learn a set of standard definitions for identifying suicidal ideation and behavior, homicidal behavior, and domestic violence. Through the use of case vignettes, options for clinical management of safety risk using the 'Risk Assessment and Safety Plan' will be demonstrated.

View the course outline [here](#).

## Audience

All substance-use and behavioral health therapists, counselors, family & support partners, case managers, and other direct service providers working within the behavioral health system of care primarily in substance use disorder programs.



## Learning Objectives

Upon completion of this training participants will be able to:

- Identify a set of standard definitions for identification of suicidal ideation and behavior.
- Administer the San Diego County 'Risk Assessment and Safety Plan', which includes the Columbia Suicide Severity Rating Scale (C-SSRS).
- Demonstrate options for clinical management of suicide risk using the C-SSRS and Safety Plan form.

[Click Here](#) to log into the LMS and Register

**Registration:** If you already have an account, you may search for the course by name or course code. If you do not have an account in the LMS you will need to open one by [clicking here](#). Email [RIHS@sdsu.edu](mailto:RIHS@sdsu.edu) if you have any questions. This training is FREE of charge to BHS County employees and contractors.

**Continuing Education:** This course meets the qualifications for 1 hours of continuing education credit for LMFTs, LCSWs, LPCCs, and/or LEPs as required by the California Board of Behavioral Sciences. The Academy for Professional Excellence is approved by the American Psychological Association to sponsor continuing education for psychologists and the California Association of Marriage and Family Therapists to sponsor continuing education for LMFTs, LCSWs, LPCCs and LEPs, Provider #91928. The Academy for Professional Excellence is approved by the California Board of Registered Nursing, Provider # BRN CEP15014; CCAPP-EI, Provider # 1S-98-398-0820, and CAADE Provider # CP10-906-CH0320 for 1 contact hours/CEHs. The Academy for Professional Excellence maintains responsibility for this program and its content. CE certificates will be available for download 5 business days after course completion. Click here for information on how to [obtain CE Certificates](#). Click here for the [CE Grievance Procedure](#).



Responsive Integrated Health Solutions (RIHS) is a County of San Diego Behavioral Health contracted program of the Academy for Professional Excellence, and a project of San Diego State University School of Social Work.

