

PREVENTION: MORE THAN WHAT YOU THINK

Trainer: [Angela Goldberg, M.A.](#)



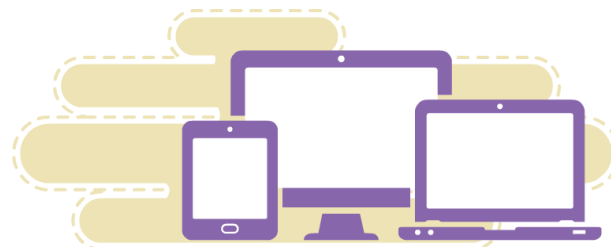
Tuesday, April 9, 2019 | 10am-11am

Course Code: BHE104/LIVE

Course Description

This learning session will provide an engaging and interactive presentation on prevention with a focus on the County of San Diego Environmental Prevention System for Substance Use Disorders. Understanding the relationship that mental health prevention and early intervention has with substance use disorder prevention as well as an increased knowledge of the components that represent the medical model of prevention will be included. Attendees will gain an understanding of how individual and environmental prevention differ, how local prevention efforts align with the State prevention framework, and how they can engage in further prevention efforts.

View the course outline [here](#).



Learning Objectives

Upon completion of this training participants will be able to:

- Describe the medical model of prevention.
- Identify how environmental prevention differs from individual-focused prevention.
- Demonstrate ways to engage in prevention efforts.
- Discuss the County of San Diego Behavioral Health Prevention System

Audience

BHS therapists, counselors, family & support partners, case managers, and other direct service providers working within the behavioral health system of care.

[Click Here](#) to log into the LMS and Register

Registration: If you already have an account, you may search for the course by name or course code. If you do not have an account in the LMS you will need to open one by [clicking here](#). Email RIHS@sdsu.edu if you have any questions. This training is FREE of charge to BHS County employees and contractors.

Continuing Education: This course meets the qualifications for 1 hours of continuing education credit for LMFTs, LCSWs, LPCCs, and/or LEPs as required by the California Board of Behavioral Sciences. The Academy for Professional Excellence is approved by the American Psychological Association to sponsor continuing education for psychologists and the California Association of Marriage and Family Therapists to sponsor continuing education for LMFTs, LCSWs, LPCCs and LEPs, Provider #91928. The Academy for Professional Excellence is approved by the California Board of Registered Nursing, Provider # BRN CEP15014; CCAPP-EI, Provider # 1S-98-398-0820, and CAADE Provider # CP10-906-CH0320 for 1 contact hours/CEHs. The Academy for Professional Excellence maintains responsibility for this program and its content. CE certificates will be available for download 5 business days after course completion. Click here for information on how to [obtain CE Certificates](#). Click here for the [CE Grievance Procedure](#).



Responsive Integrated Health Solutions (RIHS) is a County of San Diego Behavioral Health contracted program of the Academy for Professional Excellence, and a project of San Diego State University School of Social Work.

