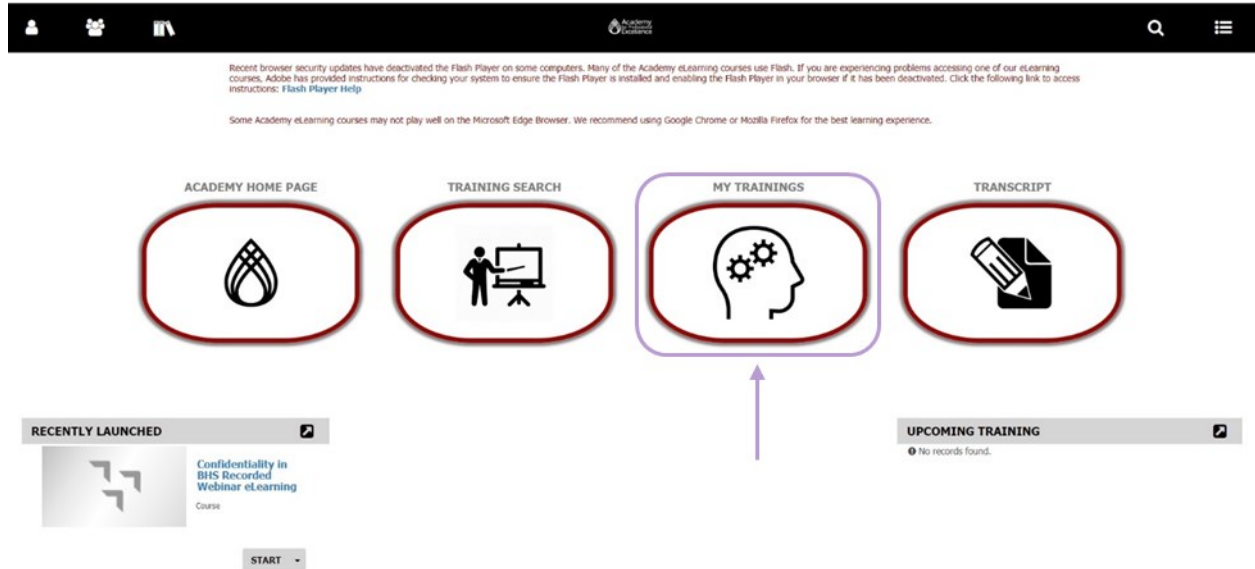
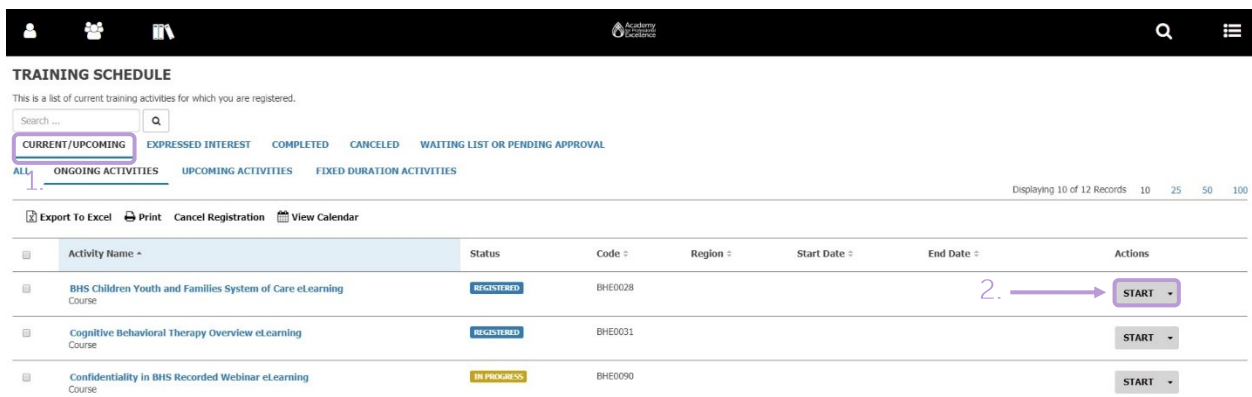


## Accessing an eLearning Training

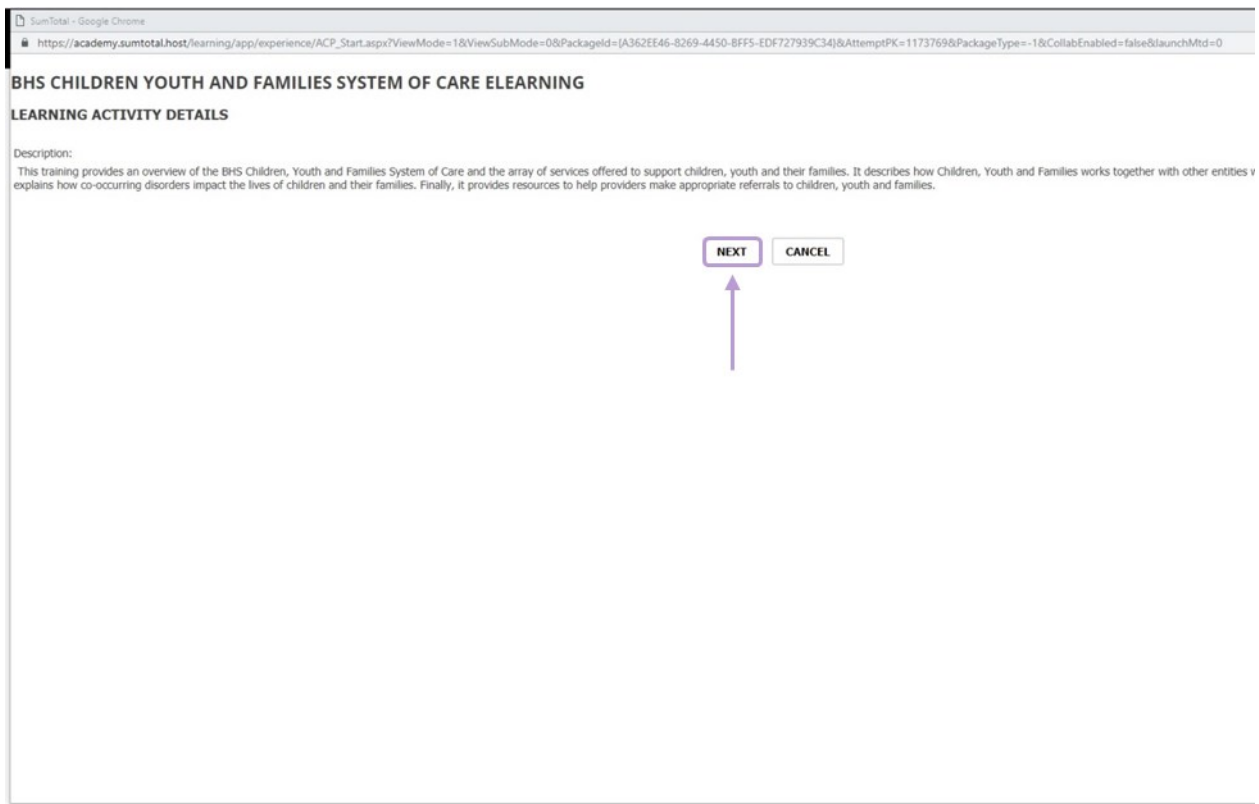
1. Login to the LMS [here](#) using your BHETA username and password. Be sure to turn off your pop-up blockers before you log in
2. On the Home page, click **MY TRAININGS**, the box in the center right of the screen



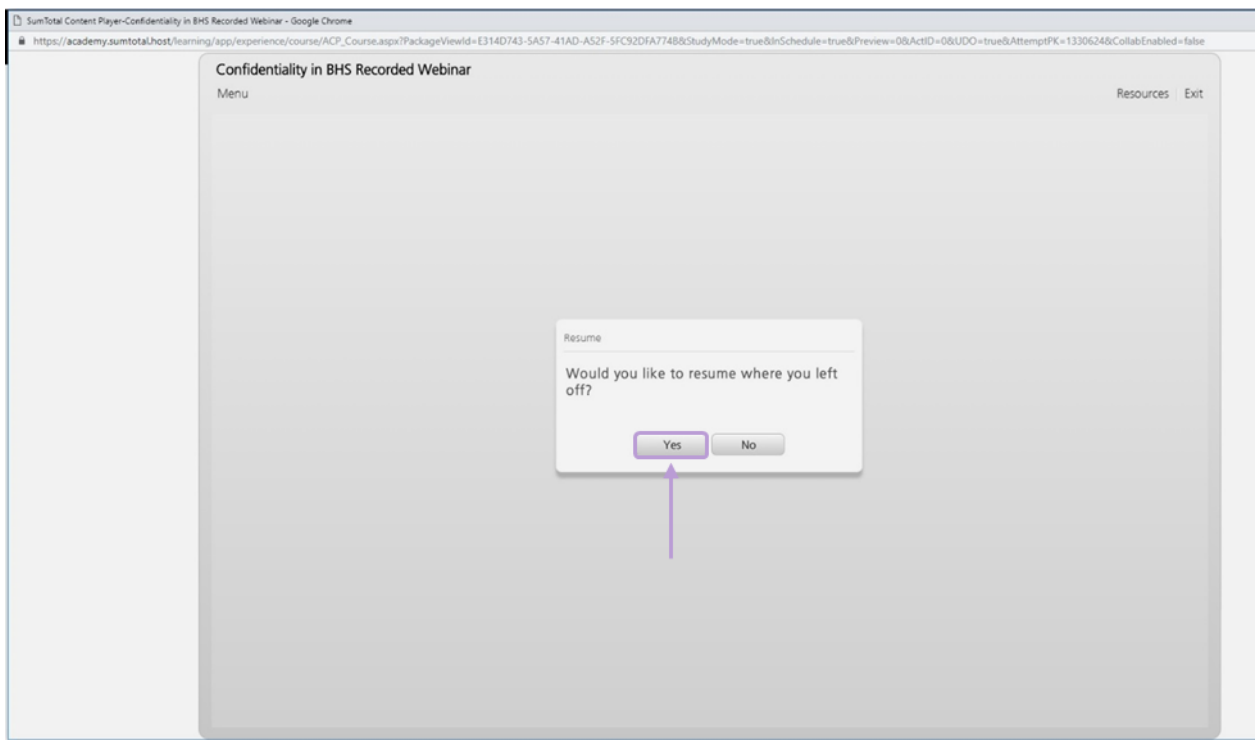
4. Make sure you are in the **CURRENT/UPCOMING** tab in the blue words under the search box in the upper right. There will be a blue line under the section you are in (1.)
5. Find the training you would like to access. Click the **START** button to the right (2.)
  - \* If there is no **START** button, click the **Training Title** in blue, then click on the **START** button on the right side of the page



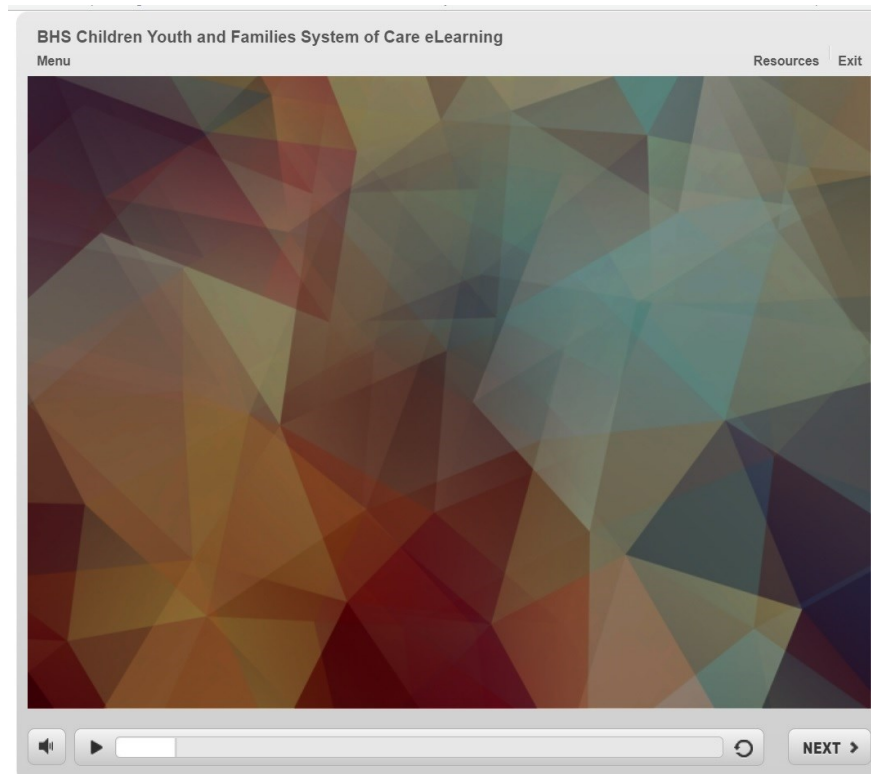
6. The eLearning will pop up in a new window. You may need to click **NEXT** or **START** to begin the eLearning



A. If you are resuming a training, click **Yes** in the smaller box in the center



7. The eLearning will begin



8. After you complete the training, click Exit in the top right

